

Parameters

Parameters	CV%	Resolution	Measure Range
K <sup>+</sup>	≤1.0%	0.01mmol/L	0.50~15.00 mmol/L
Na <sup>+</sup>	≤1.0%	0.1mmol/L	30.0~200.0 mmol/L
Cl <sup>-</sup>	≤1.0%	0.1mmol/L	30.0~200.0 mmol/L
Ca <sup>2+</sup>	≤1.5%	0.01mmol/L	0.10~5.00 mmol/L
Li <sup>+</sup>	≤1.5%	0.01mmol/L	0.30~3.00 mmol/L
pH	≤1.0%	0.01mmol/L	4.00~9.50(Unit)
CO <sub>2</sub>	≤3.0%	0.1mmol/L	6.0~50.0 mmol/L

Specifications

Methodology	Ion Selective Electrode Principle (ISE)
Parameters	K <sup>+</sup> , Na <sup>+</sup> , Cl <sup>-</sup> , nCa <sup>2+</sup> , iCa <sup>2+</sup> , TCa, Li <sup>+</sup> , pH, CO <sub>2</sub> , AG
Sample Type	Serum, Plasma, Blood, Urine
Sample Volume	100-150ul
Output	Built-in thermal printer, RS-232 serial port to LIS
Power	100~240V AC, 50/60Hz
Weight/Dimension	8.5kg / 360*320*415mm
Language	Chinese, English, French, Russian, Portuguese, Spanish

Caretium is the drafting committee of China’s national “Industrial Standard of Electrolyte Analyzer”& “Metrological Verification Regulations of Electrolyte Analyzer” and the sole manufacturer who was authorized to produce national ISE Traceable Reference Material.

**Caretium**  
Caretium Medical Instruments Co.,Limited  
Address:Beishan Industrial Park 7th Floor Building 1,  
Beishan Road, Yantian Shenzhen 518083 China  
Tel:+86 755 2527 3096 E-mail:info@caretium.com  
<https://www.caretium.com>



\*All rights reserved



**Caretium**



# XI-921

## Electrolyte Analyzer



Speed of Electrolyte Item < 60s/sample.

Calibration on every test to eliminate potential drift of electrodes.



Rapid system booting, good repeatability, low reagent consumption.



Store and statistic 30-days QC data.



Support sleep mode for non-stop working to save reagents.



May connect to LIS system and PC workstation for data management through RS-232 port to achieve unlimited data restore.

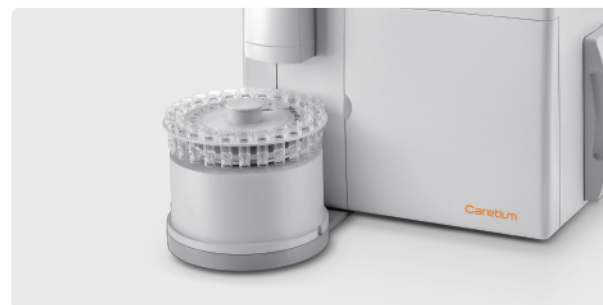
### Integrated reagent package

- Auto waste collecting, lower risk of bio-hazard, and prolong expiry date after opening.
- Manage reagent through RFID technology, record reagent remainder and prompt alarm before running out.



### Auto Sampling

- Auto test and print results after sampling, probe auto lift up for next sample.
- Optional 25 positions loader (2 for STAT), easy installment.
- Support barcode scanner.



### Touch Screen

- Large size LCD screen in high brightness for easy operation.



### Full matched reagent

- Full matched reagent and consumable supplies for multiple requirements.



### Optional parameter of appearance 1#:

XI-921F:  $K^+$ ,  $Na^+$ ,  $Cl^-$

XI-921E:  $K^+$ ,  $Na^+$ ,  $Cl^-$ ,  $Li^+$

XI-921C:  $K^+$ ,  $Na^+$ ,  $Cl^-$ ,  $nCa^{2+}$ ,  $iCa^{2+}$ , TCa, pH



### Optional parameter of appearance 2#:

XI-921B:  $K^+$ ,  $Na^+$ ,  $Cl^-$ ,  $CO_2$ , AG

XI-921D:  $K^+$ ,  $Na^+$ ,  $Cl^-$ ,  $nCa^{2+}$ ,  $iCa^{2+}$ , TCa, pH,  $CO_2$ , AG



### Excellent electrodes

- High precision, wider linearity range, stable measurement, long lifetime; Omni-directional shielding without interference.

### Reliable Liquid Positioner

- To monitor full measurement process, the volume adjustment program avoids un-stability results.

### Low Cross-contamination

- Excellent fluid system and metal coated sampling probe, get effectively lower cross-contamination.

### CO<sub>2</sub> Module

- Provide high sensitivity, lower interference, reliable and long lifetime working.

